



Capitol Square, Epsom

The **PERSONAL** Agent

£320,000

Leasehold

- Stunning Third Floor Apartment
- Allocated Parking
- Open Plan Living
- Heart of Epsom
- Luxury bathroom & ensuite
- Two Double bedrooms
- 770 sq ft of space
- Lift Service & Video Security Entry
- Indoor secured bike storage
- Stones Throw From Station

Set within a popular modern development, located within the very heart of Epsom Town Centre, this contemporary and well presented third floor apartment warrants immediate inspection to avoid disappointment.

The property itself offers 770 sq ft of accommodation. An entrance hall with storage cupboards leads through to a kitchen/living/dining area with integrated appliances as well as a nicely proportioned main bedroom with a built-in wardrobes and ensuite bathroom room. The well balanced accommodation is completed by a modern shower room with a white suite and second double bedroom.

Perfect as an investment or first time buy, or perhaps a bolt-hole for those wanting to downsize but not downgrade, this excellently positioned apartment benefits from spacious accommodation, a good amount of storage and an abundance of natural light.



The apartment is set on the third floor and has an exceptionally spacious open plan living/dining area which opens to the fitted kitchen with integrated appliances. The master bedroom is again an exceptional size with a built in wardrobe leading to the ensuite bathroom. The second bedroom is also a double room and is serviced by a separate family bathroom with white suite.

Further noteworthy points to mention include further large cupboards within the entrance hall, security entry phone system. Immediate viewing is absolutely essential to fully appreciate this particularly well balanced apartment.

Epsom town centre which offers the Ashley Shopping Centre, theatre, cinema and the Rainbow Leisure Centre is less than 2 minutes from the property, Epsom railway station which gives direct links to London is directly opposite the development.

Situated between Gatwick and Heathrow Airports and in easy travelling distance of Junction 9 of the M25.

Tenure - Leasehold

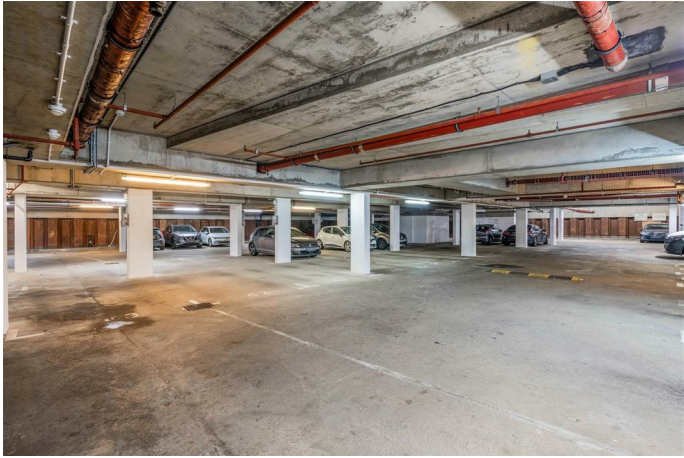
Length of lease (years remaining) - 107

Annual ground rent amount (£) - 300.00

Annual service charge amount (£) - 4427.30

Council tax band - D

PLEASE NOTE: Whilst we believe the information above to be correct, we are unable to guarantee this information until such time as we have formally verified it with the sellers. Therefore you are advised to clarify any information with your chosen legal representative before proceeding with the purchase of this property.

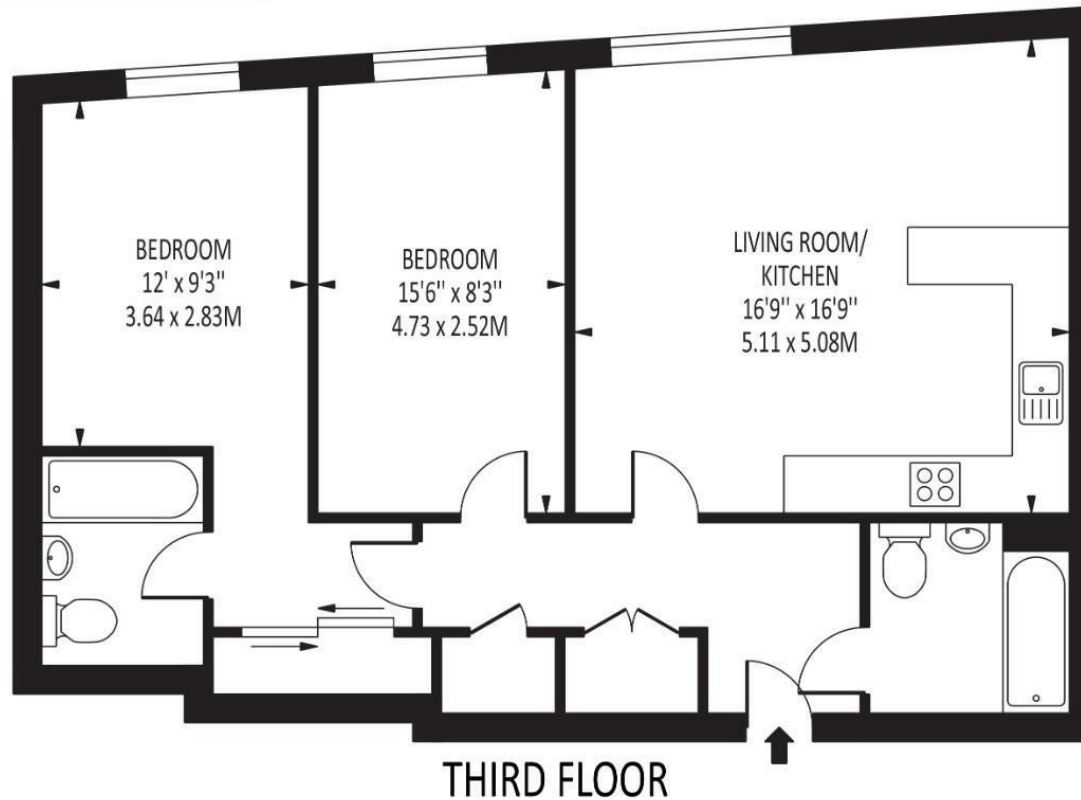




The **PERSONAL** Agent

Capitol Square

Total Area: 770 SQ FT • 71.52 SQ M



Disclaimer: For Illustration Purposes only

This floor plan should be used as a general outline for guidance only and does not constitute in whole or in part an offer of contract.
Any intending purchaser or lessee should satisfy themselves by inspection, searches, enquiries and full survey as to the correctness of each statement.
Any areas, measurements or distances quoted are approximate and should not be used to value a property or be the basis of any sale or let.

Energy Efficiency Rating		
	Current	Potential
Very energy efficient - lower running costs		
(92 plus) A		85
(81-91) B		
(69-80) C	74	
(55-68) D		
(39-54) E		
(21-38) F		
(1-20) G		
Not energy efficient - higher running costs		
England & Wales		EU Directive 2002/91/EC

EPSOM OFFICE
2 West Street
Epsom, Surrey, KT18 7RG
01372 745 850

STONELEIGH/EWELL OFFICE
62 Stoneleigh Broadway
Stoneleigh, Surrey, KT17 2HS
020 8393 9411

BANSTEAD OFFICE
141 High Street
Banstead, Surrey, SM7 2NS
01737 333 699

TADWORTH OFFICE
Station Approach Road
Tadworth, Surrey, KT20 5AG
01737 814 900

LETTINGS & MANAGEMENT
157 High Street
Epsom, Surrey KT19 8EW
01372 726 666

The
PERSONAL
Agent

The Personal Agent Ltd. Registered office: 2A Boston Rd, Henley-on-Thames RG9 1DY.
Registered in England No. 4398817.



Please Note: Whilst every attempt has been made to ensure the accuracy of the floorplans contained here, measurements of doors, windows and room areas are approximate and no responsibility is taken for any error, omission or mis-statement. These plans are for representation purposes only and should be used as such by and prospective purchaser. The services, systems and appliances listed in the specification have not been tested by The Personal Agent and no guarantee as to their operating ability or their efficiency can be given. All images and text used to advertise our properties are for the sole use of The Personal Agent Ltd.

